

800.364.0098 • Fax: 281.997.5441 • www.amerluxexterior.com

Description

The **A021 Series** consists of a decorative acorn combined with one of several styles of cast aluminum fitters.

Installation

The luminaire will mount to a 3" OD post or tenon with 5/16" black oxide coated stainless steel set screws to ensure a solid connection. The diffuser will be held to the fitter by (4) 5/16" black oxide coated stainless steel captive set screws.

Electrical

- High power factor ballast (HPF), core and coil type, pre-wired and tested
- Easy ballast pod access
- 4KV pulse rated porcelain socket
- Suitable for wet location

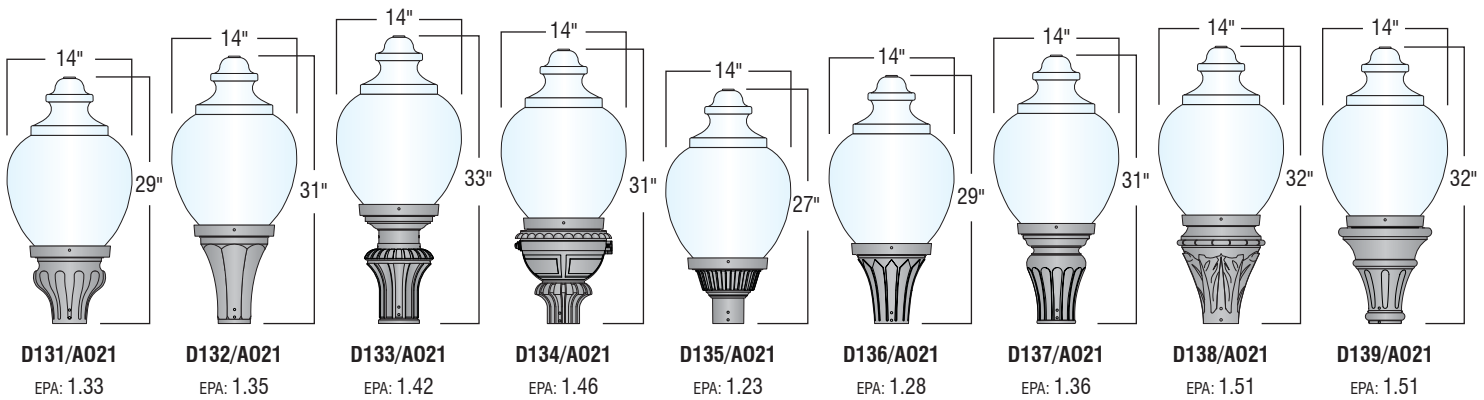
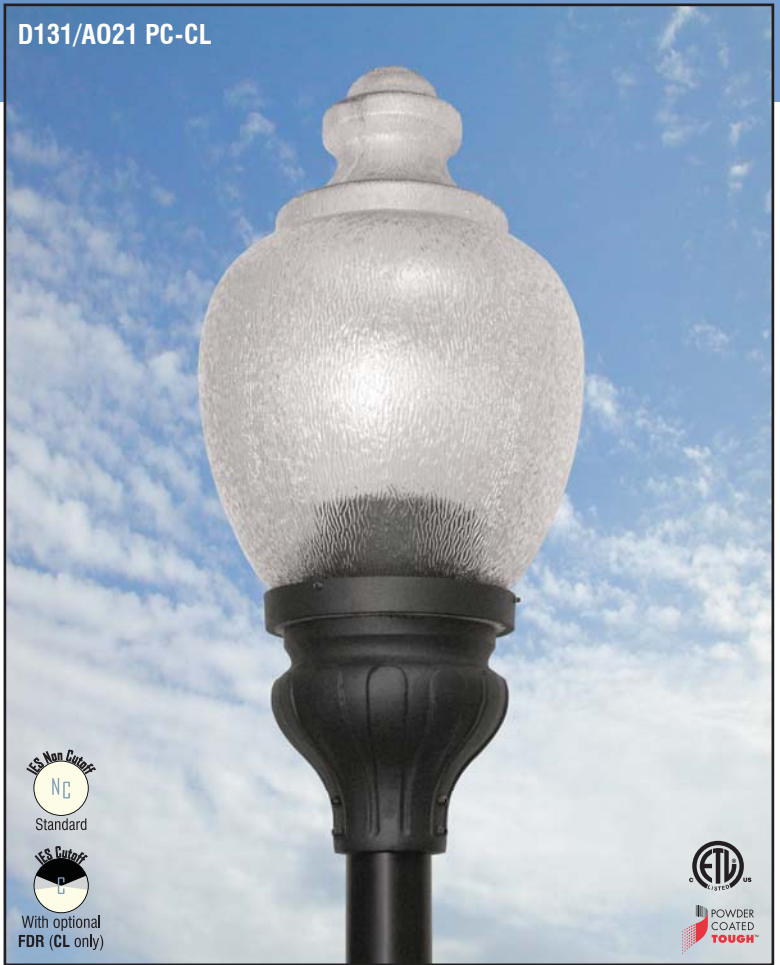
Diffuser choices

- Clear Textured Polycarbonate (**PC-CL**)
- White Textured Polycarbonate (**PC-WH**)
- Clear Textured DR Acrylic (**DR-CL**)

Finish

Premium quality thermoset polyester powdercoat (see Finish Selection)

D131/A021 PC-CL



Ordering Guide

Fitter	Diffuser	Material-Color	Light Source	Voltage	Finish	Options
D131/A021	PC-CL	100HPS	120v	BLK	L3 / CFIN	
	PC-WH	100MH, 150MH	208v	CLB, GRN	L5, LVR	
	DR-CL	150HPS	240v	WHT, TBK	FDR, HSS	
			277v	ATC, GTG	BB, BB-FW	SR

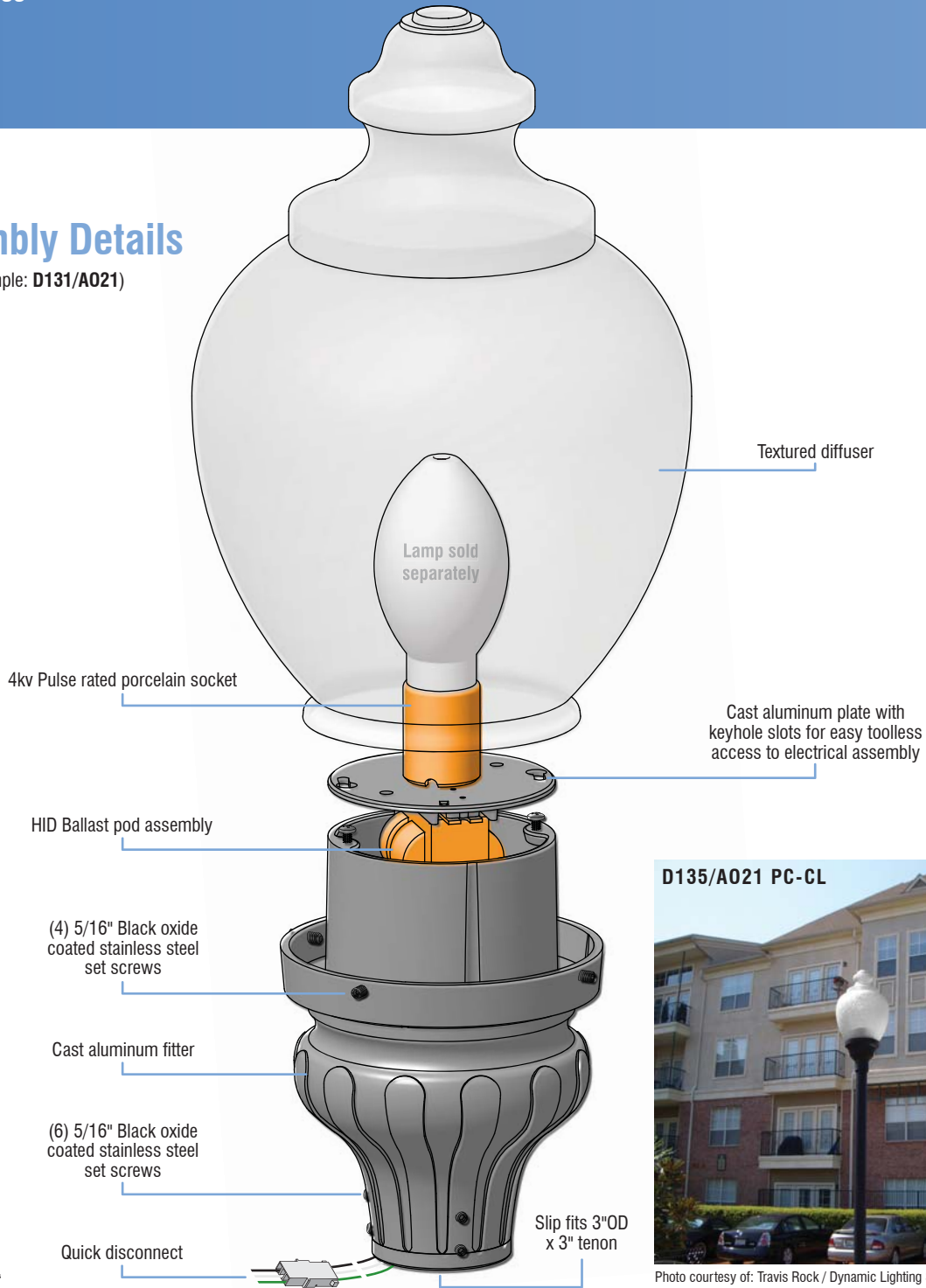
Additional light sources, voltages, and custom colors are available. Contact factory for details.

Light Sources

Wattage	Socket Type
50MH, 70MH, 100MH, 150MH	Medium
50HPS, 70HPS, 100HPS	Medium
150HPS	Mogul
PL-13	2-pin
CFL 26, 32, or 42	4-pin

Assembly Details

(Example: D131/A021)



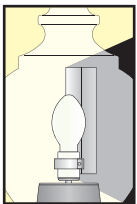
D135/A021 PC-CL



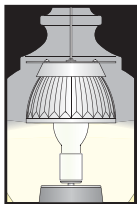
Photo courtesy of: Travis Rock / Dynamic Lighting Solutions, LLC



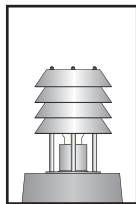
Options



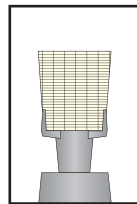
HSS
House Side Shield
for use with
Optical Systems



FDR
Faceted
Downlight
Reflector

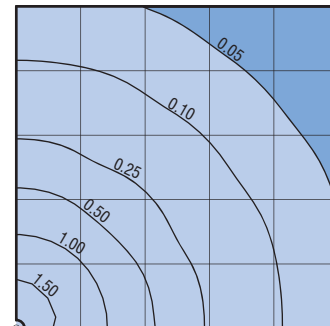


LVR
4 Tier
Anodized
Aluminum
Louver



L3 or L5
Type III (L3) or
Type V (L5)
Glass Refractor

Standard Photometry



A021-CL Assembly
Typical HID light source
14,000 Lumen
12' Mounting Height
Grid Spacing is 12'