

Description

The **D343** Luminaire is a large scale 8 sided spiked lantern. One of several optical systems may be used including a Type III (**L3**) or Type V (**L5**) Borosilicate glass refractor or one of the **HR** systems shown below.

Installation

The luminaire will mount to a 3" OD post or tenon with 5/16" black oxide coated stainless steel set screws to ensure a solid connection.

Electrical

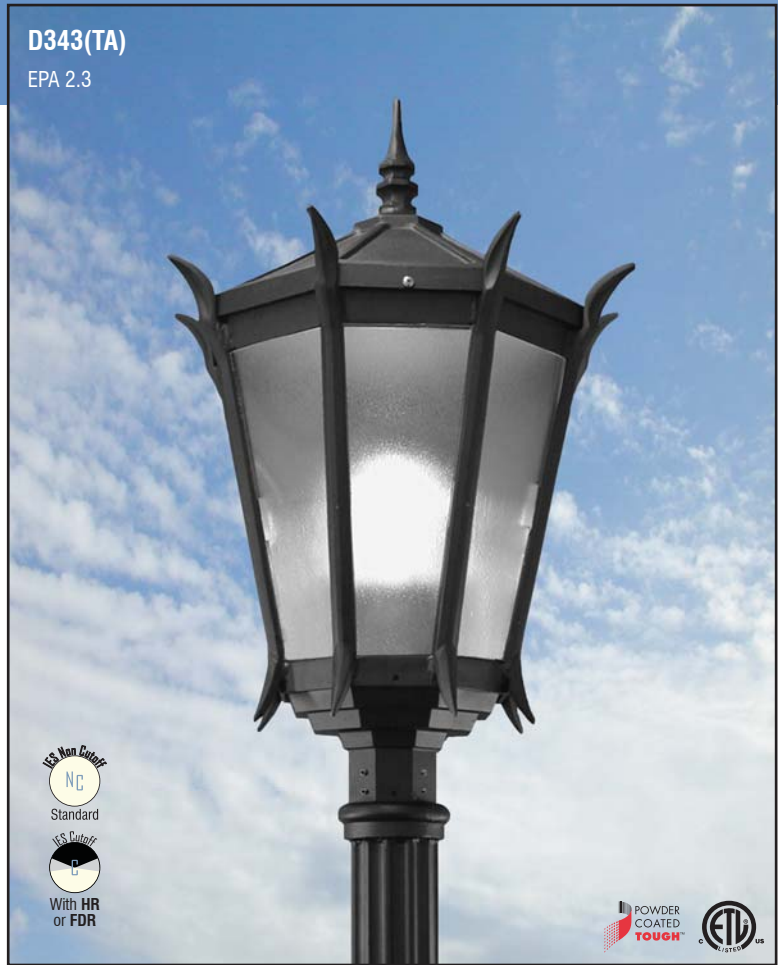
- High power factor ballast (HPF), core and coil type, pre-wired and tested
- Easy ballast pod access
- 4KV pulse rated porcelain socket
- Suitable for wet location

Lenses

- Textured Acrylic (**TA**)
- Clear Acrylic (**CA**)

Finish

Premium quality thermoset polyester powdercoat (see Finish Selection)

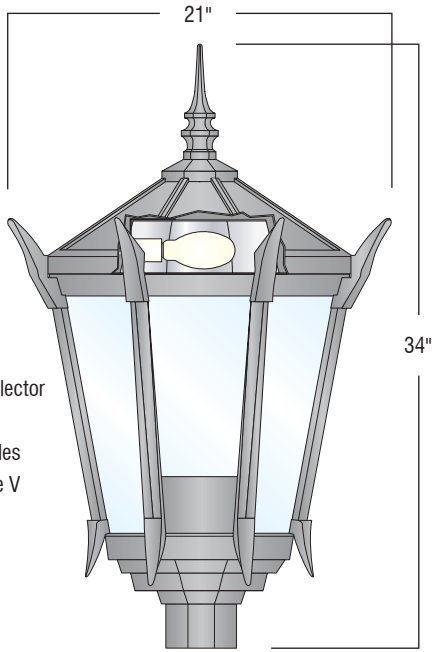


Luminaire	Lens	Light Source	Voltage	Finish	Option
D343	(TA)	100HPS	120v	BLK	HSS
	PA	100MH	208v	CLB,GRN	FDR,LVR
	CA	PL-13,(2)PL13	240v	WHT,TBK	HR3,HR5
		CFL26,CFL32	277v	ATC,GTG	L3,L5,HG
		CFL42			CHM,PCL

Additional light sources, voltages, and custom colors are available. Contact factory for details.

Light Sources	Wattage	Socket Type
	50MH,70MH,100MH,150MH	Medium
	175MH-PS,250MH-PS	Mogul
	50HPS,70HPS,100HPS	Medium
	150HPS,250HPS	Mogul
	PL-13	2-pin
	CFL 26,32,or 42	4-pin

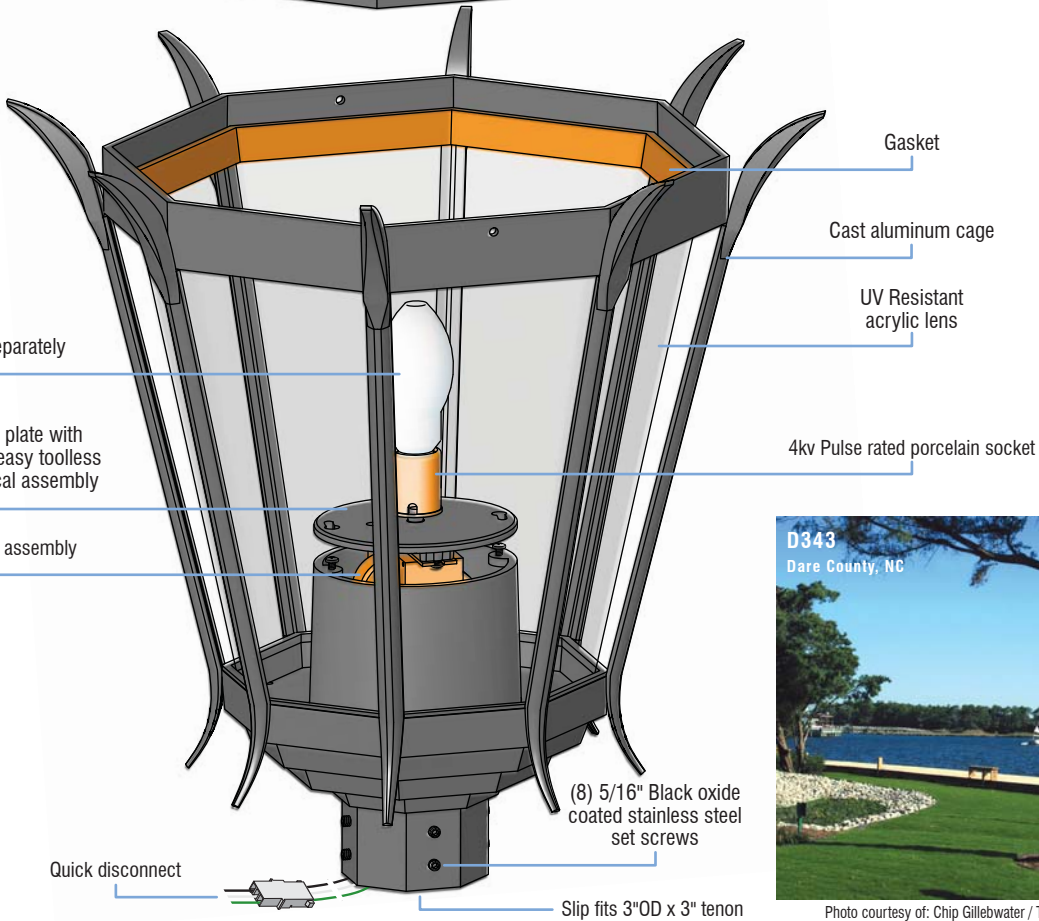
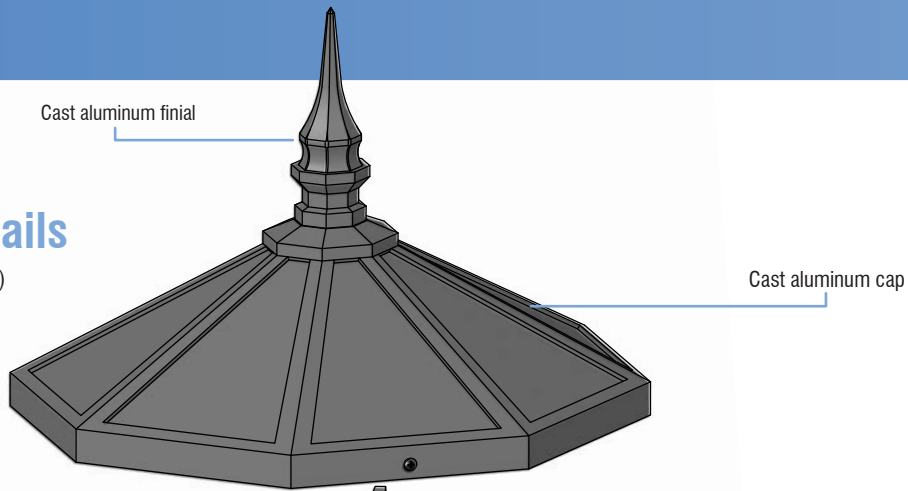
Luminaire / Optical System	HPS	MH	Inc
D343 with lenses only	150	150	200
D343 with Refractor (L3 or L5)	250	250	300
D343 with Louver (LVR)	250	250	200
D343 with Horizontal Reflector (HR3 or HR5)	250	250	300
D343 with Hurricane Glass (HG)	100	100	100



D343(HR3) or **(HR5)**
Segmented reflector with horizontal lamping provides Type III or Type V distribution.

Assembly Details

(Example: D343(CA)/L5)



Cast Aluminum plate with keyhole slots for easy toolless access to electrical assembly

HID Ballast pod assembly

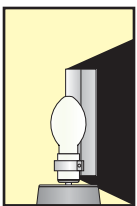
Lamp sold separately



Photo courtesy of: Chip Gillegwater / Thomas Harris & Company



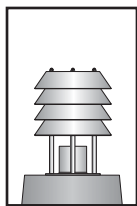
Options



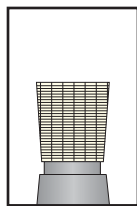
HSS
House Side Shield
for use with
Optical Systems



FDR
Faceted
Downlight
Reflector

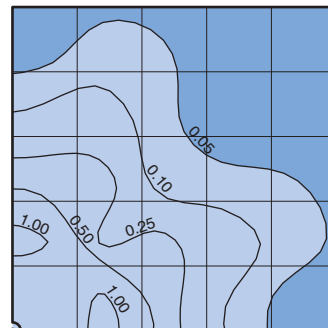


LVR
4 Tier
Anodized
Aluminum
Louver



L3 or L5
Type III (L3) or
Type V (L5)
Glass Refractor

Standard Photometry



D343(TA)

Typical HID light source
14,000 Lumen
12' Mounting Height
Grid Spacing is 12'