

## Springfield Series

### Features

10 1/2" octagonal cast aluminum base (.250 min. wall) with exterior mounting plate and 1 1/2" square base cover

Choice of extruded shafts (.125 wall)  
 3" OD smooth round  
 3" OD fluted (12 flat flutes)  
 4" OD smooth round  
 4" OD fluted (12 flat flutes)  
 4" to 3" OD smooth tapered

Extruded shaft is circumferentially welded to the base

3" tenon for luminaire mounting

Strong yet lightweight for ease of installation

Galvanized anchor bolts included

Access door for anchor bolts and wiring is secured with tamper resistant stainless steel screws

Ground lug provided inside base

Models with 4" shafts are capable of supporting multiple light brackets.

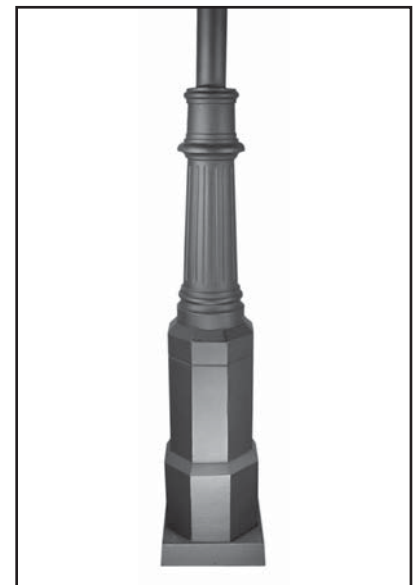
### Materials

**Base** - Cast aluminum (A319)

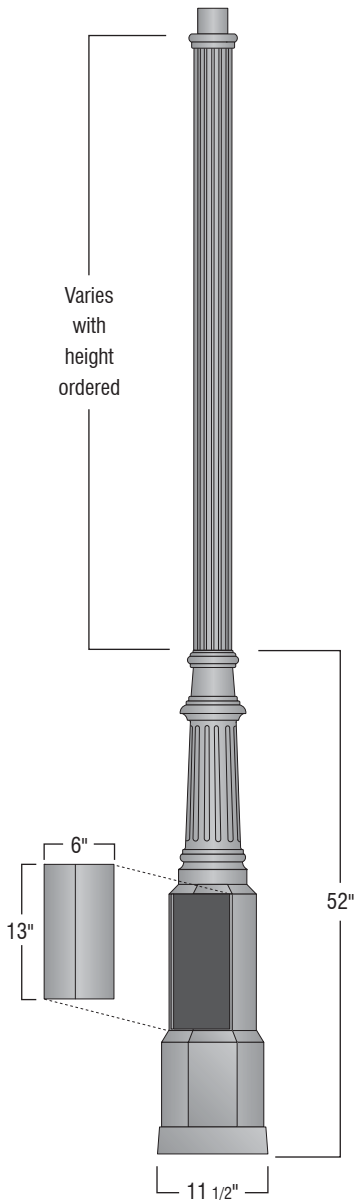
**Shaft** - Extruded Aluminum (6005-T5)  
 - Tapered Aluminum (6063-T6)

**Tenon** - Cast aluminum (A319)

**Anchor Bolts** - Hot dipped galvanized steel



D4030-xx	D4031-xx	D4032-xx	D4033-xx	D4034-xx	overall height
D4030-08	D4031-08	D4032-08	D4033-08	D4034-08	8'-4"
D4030-10	D4031-10	D4032-10	D4033-10	D4034-10	10'-4"
D4030-12	D4031-12	D4032-12	D4033-12	D4034-12	12'-4"
D4030-14		D4032-14	D4033-14	D4034-14	14'-4"
		D4032-16	D4033-16	D4034-16	16'-4"



**Finish**

The post will be finished with an electrostatically applied thermoset polyester powder coat. Prior to finishing, the parts are thoroughly cleaned using both abrasive and chemical methods. Our powder coat finish is durable, long lasting, attractive and scratch resistant as well as environmentally friendly. We offer 7 stock finishes or hundreds of special order colors including custom matching for existing projects (stock colors shown below).

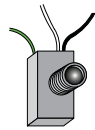
Standard solid colors are:

- GRN** - Green
- CLB** - Classic Bronze
- TBK** - Textured Black
- BLK** - Satin Black

Premium finishes are:

- GTG** - Granite Green
- ATC** - Antique Copper
- WHT** - White

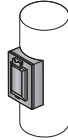
**Accessories** See "Accessories" section for more information



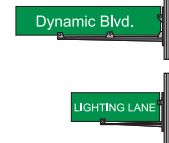
**PCL**  
Dusk to dawn photocell  
Available for 120v (PCL)  
or 208-277v (PCL multi).



**Banner Arms**  
Field rotatable  
or fixed location  
banner arms.



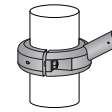
**GFCI**  
Ground fault circuit  
protected duplex outlet.  
Available Recess  
mounted (GFCI-RM) as  
shown or surface mount  
(GFCI-SM).



**Street Signage**  
Several mounting  
options and custom  
signs available. See  
guide in accessories  
section.



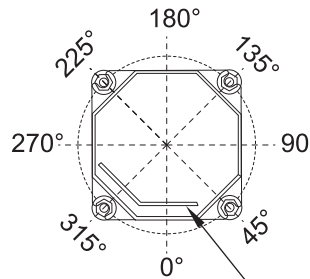
**LR**  
Cast aluminum decorative  
ladder rest. Slip fits 3"o.d.  
pole or tenon (not  
designed to support  
ladder).



**FPH-4**  
Extruded aluminum  
holder for 1" OD flag  
poles. Available for  
4" OD non-tapered  
pole.

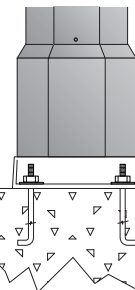
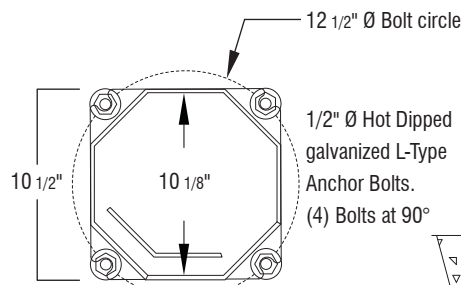
**Accessory Orientation Guide**

As viewed  
from above



Specify orientation  
of accessories  
when ordering.

**Anchor Details**



11 1/2" sq.  
base cover slips  
over the pole and  
conceals  
anchor bolts.

Anchor bolts and templates can be requested prior to product shipment.

**Ordering Guide**

