

Shaft Detail

4" OD Smooth
.125 wall

4" OD Fluted
.125 wall

4" to 3" OD
Smooth .125 wall

3"OD x 3"
Tenon

overall
height

8"

4" Extruded Series

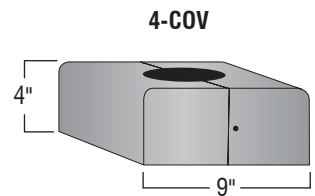
Features

- 8" square cast aluminum base plate
- Choice of extruded shafts (.125 wall)
 - 4" OD smooth round
 - 4" OD fluted (12 flat flutes)
 - 4" to 3" tapered smooth
- Extruded shaft is circumferentially welded to the base
- 3" tenon for luminaire mounting
- Strong yet lightweight for ease of installation
- Galvanized anchor bolts included
- Extruded door for wiring access is standard on poles over 8'
- Ground lug provided inside base
- Capable of supporting multiple light brackets

Materials

- Base** - Cast aluminum (A319)
- Shaft** - Extruded aluminum (6005-T5)
 - Tapered aluminum (6063-T6)
- Tenon** - Cast aluminum (A319)
- Anchor Bolts** - Hot dipped galvanized steel

Optional Two Piece Base Cover

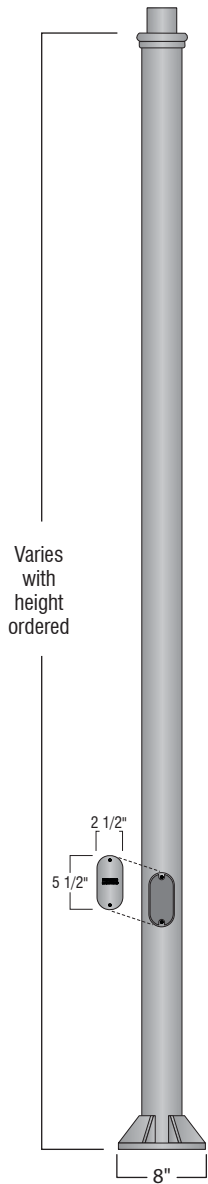


Two piece cover is fabricated from aluminum. See "Pole Accessories" for other available base covers.

DPO4/PLT-xx	FPO4/PLT-xx	TPO43/PLT-xx	overall height
*DPO4/PLT-08	*FPO4/PLT-08	*TPO43/PLT-08	8'-0"
DPO4/PLT-10	FPO4/PLT-10	TPO43/PLT-10	10'-0"
DPO4/PLT-12	FPO4/PLT-12	TPO43/PLT-12	12'-0"
DPO4/PLT-14	FPO4/PLT-14	TPO43/PLT-14	14'-0"

*Access door is not a standard feature

4" Extruded Series



Varies with height ordered

Access door is standard on 10' poles and above. It must be specified for 6' and 8' poles if required. Add "ACC" after part number.

Finish

The post will be finished with an electrostatically applied thermoset polyester powder coat. Prior to finishing, the parts are thoroughly cleaned using both abrasive and chemical methods. Our powder coat finish is durable, long lasting, attractive and scratch resistant as well as environmentally friendly. We offer 7 stock finishes or hundreds of special order colors including custom matching for existing projects (stock colors shown below).

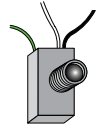
Standard solid colors are:

- GRN** - Green
- CLB** - Classic Bronze
- TBK** - Textured Black
- BLK** - Satin Black

Premium finishes are:

- GTG** - Granite Green
- ATC** - Antique Copper
- WHT** - White

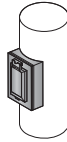
Accessories See "Accessories" section for more information



PCL
Dusk to dawn photocell Available for 120v (PCL) or 208-277v (PCL multi).



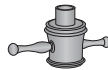
Banner Arms
Field rotatable or fixed location banner arms.



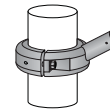
GFCI
Ground fault circuit protected duplex outlet. Available Recess mounted (GFCI-RM) as shown or surface mount (GFCI-SM).



Street Signage
Several mounting options and custom signs available. See guide in accessories section.

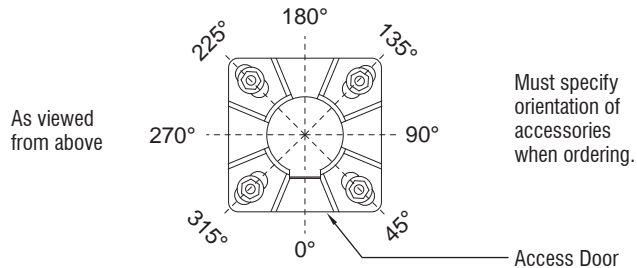


LR
Cast aluminum decorative ladder rest. Slip fits 3"o.d. pole or tenon (not designed to support ladder).

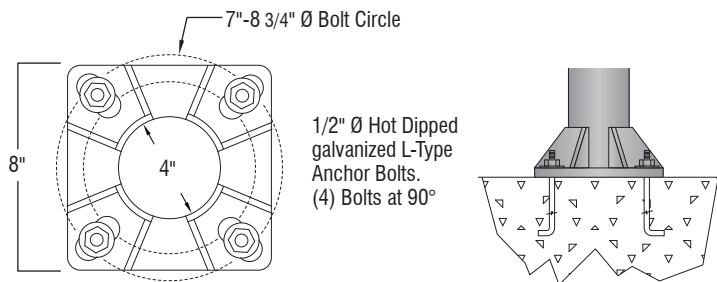


FPH-4
Extruded aluminum holder for 1" OD flag poles. Available for 4" OD non-tapered pole.

Accessory Orientation Guide



Anchor Details



Anchor bolts and templates can be requested prior to product shipment.

Ordering Guide

